



MARTINS ESTATES

SALES AND LETTINGS

Martins Estates Sales And Lettings High Street
Ashford
Kent
TN24 8SF

Tel: 01233610444



2 Cheviot Way, Ashford, Kent TN24 8RF

£775 Per Month

2 bedroom ground floor flat close to the town centre and local amenities. The property comprises: entrance hallway, 2 bedrooms, lounge, kitchen, family bathroom and also benefits from an outside storage cupboard and garage. Available now!

Pets not accepted

2 Cheviot Way, Ashford, Kent TN24 8RF

Cheviot Way, Ashford, TN24

Approximate Gross Internal Area = 59.5 sq m / 640 sq ft

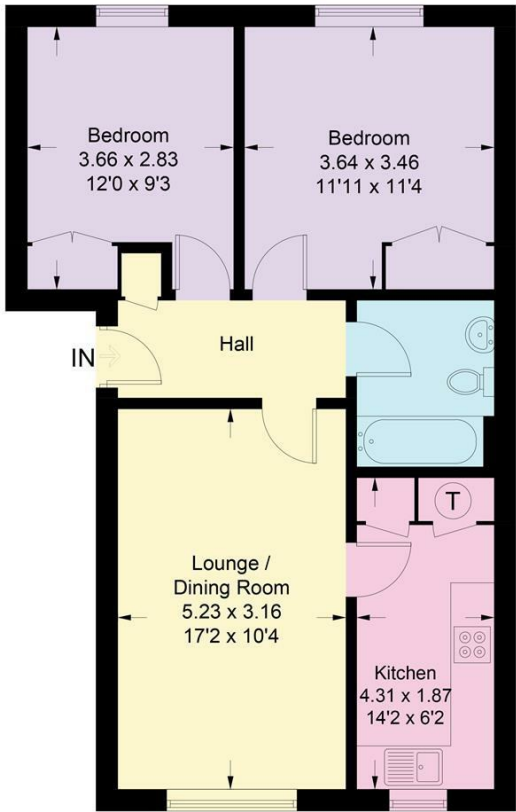
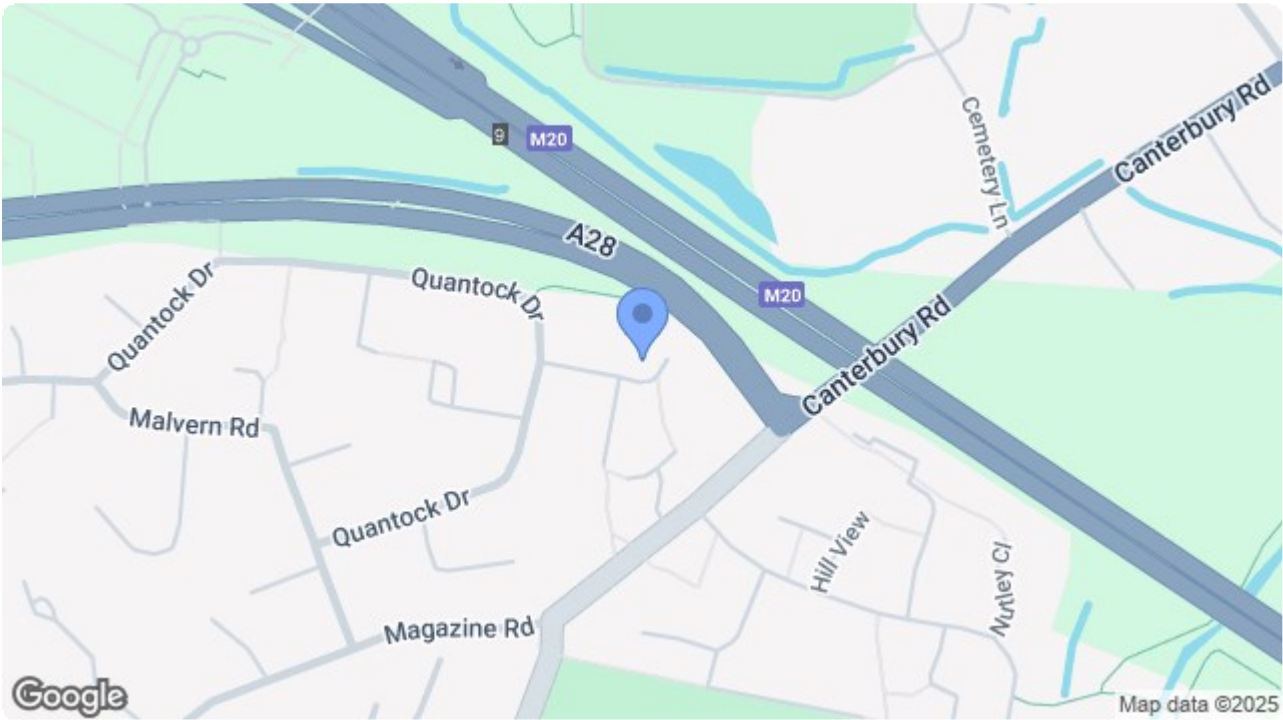


Illustration for identification purposes only, measurements are approximate, not to scale. floorplansUsketch.com © (ID1069736)



Energy Efficiency Rating		Current	Potential
Very energy efficient - lower running costs			
(92 plus) A			
(81-91) B			
(69-80) C			
(55-68) D			
(39-54) E			
(21-38) F			
(1-20) G			
Not energy efficient - higher running costs			
England & Wales		EU Directive 2002/91/EC	

Environmental Impact (CO ₂) Rating		Current	Potential
Very environmentally friendly - lower CO ₂ emissions			
(92 plus) A			
(81-91) B			
(69-80) C			
(55-68) D			
(39-54) E			
(21-38) F			
(1-20) G			
Not environmentally friendly - higher CO ₂ emissions			
England & Wales		EU Directive 2002/91/EC	

69 HIGH STREET, ASHFORD, KENT TN24 8SF
Tel: 01233 610444 www.martinsstates.co.uk email: sales@martinsstates.co.uk



Martine Estates Property Management Ltd
Registered in England and Wales No.10031401
Registered office: 69 High Street, Ashford, Kent, TN24 8SF
Martins Wilkins T/A Martins Estates Sales and Lettings