



MARTINS ESTATES

SALES AND LETTINGS

Martins Estates Sales And Lettings High Street
Ashford
Kent
TN24 8SF

Tel: 01233610444



25 Augustine Drive, Finberry, TN25 7GH

Asking Price £300,000

Nestled in the charming Augustine Drive, Finberry, this delightful end terrace house is a gem waiting to be discovered. Boasting a contemporary living space, two inviting bedrooms, and a modern bathroom with a shower, this property offers comfort and style in equal measure.

Built in 2018, this house exudes contemporary elegance and is impeccably maintained, making it a true haven for those seeking a peaceful retreat. The addition of a utility room and a ground floor cloakroom adds to the convenience and functionality of the space, ensuring that daily tasks are a breeze.

With a generous 764 sq ft of living space, this property provides ample room for relaxation and entertainment. The water softener further enhances the quality of living, offering a touch of luxury to everyday life providing softened water throughout the house.

Parking is always a breeze with space for two vehicles, eliminating the hassle of searching for a spot after a long day. The immaculate condition of the house speaks volumes about the care and attention it has received, promising a move-in ready experience for the new owners.

The property benefits from front and rear gardens, with the rear garden providing a low maintenance artificial grassed area making it usable throughout the year.

Don't miss the opportunity to make this house your home - book a viewing today and step into a world of comfort, style, and convenience at Augustine Drive.

25 Augustine Drive, Finberry, TN25 7GH

Open plan contemporary living space

Utility room

With door to rear garden

Ground floor cloakroom

Landing

Bedroom 1

With large walk in wardrobe with double sliding doors

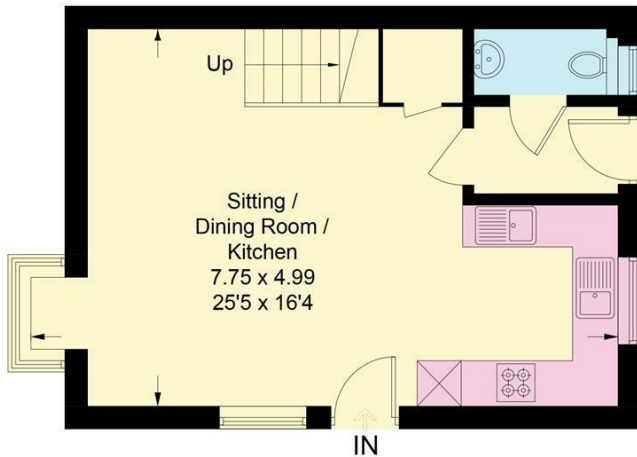
Bedroom 2

Family Bathroom

Four piece suite with Separate shower cubicle, WC, Washhand basin and bath.

Augustines Drive, Ashford, TN25

Approximate Gross Internal Area = 70.9 sq m / 763 sq ft



Ground Floor



First Floor

Illustration for identification purposes only, measurements are approximate, not to scale. floorplansUsketch.com © (ID1105296)



Energy Efficiency Rating		Current	Potential
Very energy efficient - lower running costs			
(92 plus) A			
(81-91) B			
(69-80) C			
(55-68) D			
(39-54) E			
(21-38) F			
(1-20) G			
Not energy efficient - higher running costs			
		81	
England & Wales		EU Directive 2002/91/EC	

Environmental Impact (CO ₂) Rating		Current	Potential
Very environmentally friendly - lower CO ₂ emissions			
(92 plus) A			
(81-91) B			
(69-80) C			
(55-68) D			
(39-54) E			
(21-38) F			
(1-20) G			
Not environmentally friendly - higher CO ₂ emissions			
England & Wales		EU Directive 2002/91/EC	

69 HIGH STREET, ASHFORD, KENT TN24 8SF

Tel: 01233 610444 www.martinsstates.co.uk email: sales@martinsstates.co.uk



Martins Estates Property Management Ltd
Registered in England and Wales No. 10031401
Registered office: 69 High Street, Ashford, Kent, TN24 8SF
Martins Wilkins T/A Martins Estates Sales and Lettings