

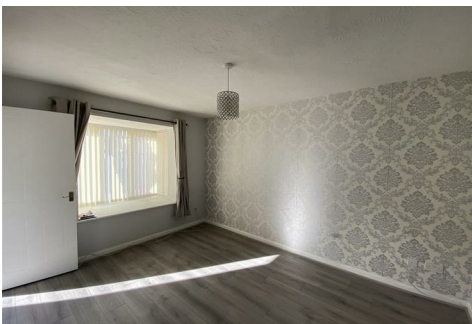


# MARTINS ESTATES

SALES AND LETTINGS

Martins Estates Sales And Lettings High Street  
Ashford  
Kent  
TN24 8SF

Tel: 01233610444

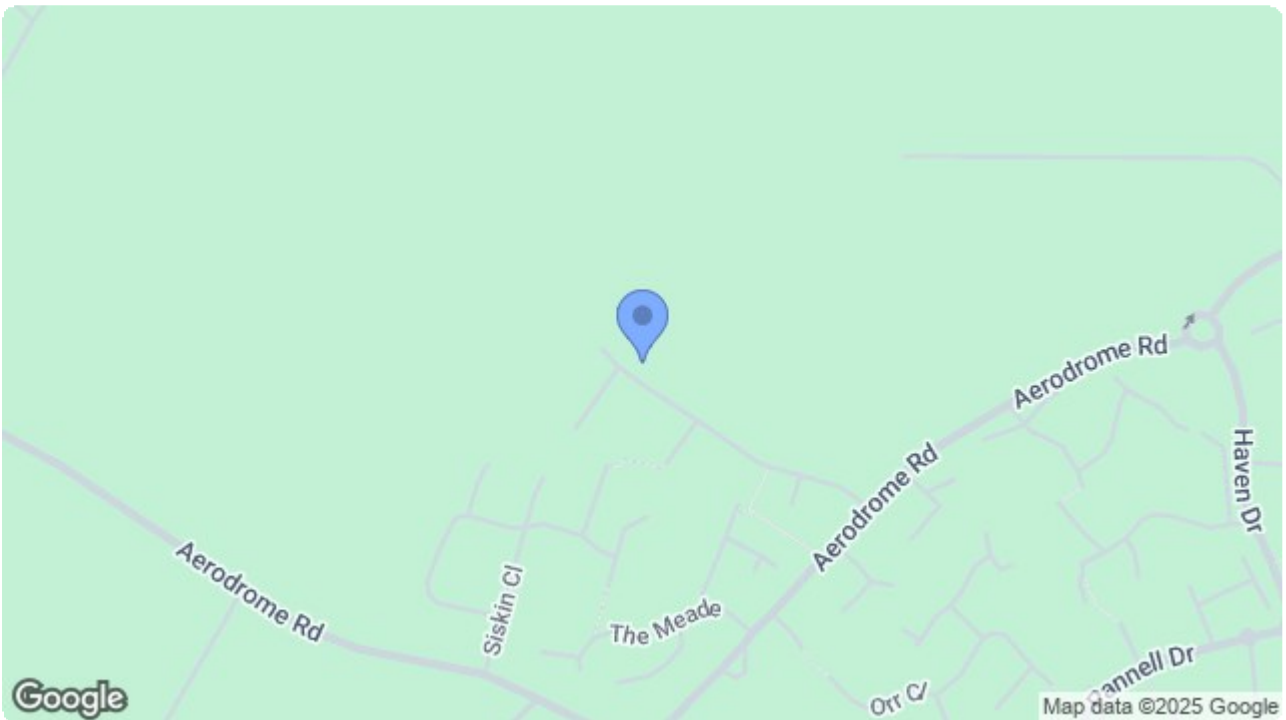


**4 Gillman Close, Folkestone, Kent CT18 7NR**

**£1,100 Per Month**

A two bedroom mid terrace house with off road parking for one vehicle. The property comprises kitchen/diner, lounge, family bathroom, two bedrooms and an enclosed rear garden. Available now!

**4 Gillman Close, Folkestone, Kent CT18 7NR**



Energy Efficiency Rating		Current	Potential
<i>Very energy efficient - lower running costs</i>			
(92 plus) <b>A</b>			<b>92</b> <b>63</b>
(81-91) <b>B</b>			
(69-80) <b>C</b>			
(55-68) <b>D</b>			
(39-54) <b>E</b>			
(21-38) <b>F</b>			
(1-20) <b>G</b>			
<i>Not energy efficient - higher running costs</i>			
<b>England &amp; Wales</b>		EU Directive 2002/91/EC	

Environmental Impact (CO <sub>2</sub> ) Rating		Current	Potential
<i>Very environmentally friendly - lower CO<sub>2</sub> emissions</i>			
(92 plus) <b>A</b>			
(81-91) <b>B</b>			
(69-80) <b>C</b>			
(55-68) <b>D</b>			
(39-54) <b>E</b>			
(21-38) <b>F</b>			
(1-20) <b>G</b>			
<i>Not environmentally friendly - higher CO<sub>2</sub> emissions</i>			
<b>England &amp; Wales</b>		EU Directive 2002/91/EC	

69 HIGH STREET, ASHFORD, KENT TN24 8SF

Tel: 01233 610444 [www.martins Estates.co.uk](http://www.martins Estates.co.uk) email: [sales@martins Estates.co.uk](mailto:sales@martins Estates.co.uk)



Martins Estates Property Management Ltd  
 Registered in England and Wales No. 10031401  
 Registered office: 69 High Street, Ashford, Kent, TN24 8SF  
 Martins Wilkins T/A Martins Estates Sales and Lettings