

MARTINS ESTATES

SALES AND LETTINGS

Martins Estates Sales And Lettings High Street
Ashford
Kent
TN24 8SF

Tel: 01233610444



5 Maurice Buckmaster Lane, Kent, TN23 3RU

Asking Price £274,995

A very well presented two bedroom semi-detached house situated on the popular estate Repton Park and close to local amenities including local shops and cafes. Only minutes walking distance from Waitrose and close to junction 9 of the M20. The property is also situated within a few minutes walk of Repton Park Primary School and the local Nursery.

The property comprises a modern fitted kitchen, lounge/dining area, fully fitted family bathroom and two good-sized bedrooms, with the main bedroom including an en-suite.

The property benefits from a rear garden and carport.

Room sizes:

GROUND FLOOR

Entrance Hall

Kitchen: 8'7 x 8'6 (2.62m x 2.59m)

Lounge/Diner: 15'1 maximum x 13'4 maximum (4.60m x 4.07m)

Cloakroom

FIRST FLOOR

Landing

Bedroom 1: 13'2 x 8'9 (4.02m x 2.67m)

5 Maurice Buckmaster Lane, Kent, TN23 3RU

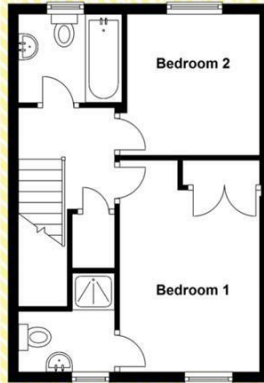
Ground Floor

Approx. 31.5 sq. metres (338.8 sq. feet)



First Floor

Approx. 31.6 sq. metres (340.0 sq. feet)



Energy Efficiency Rating		Current	Potential
Very energy efficient - lower running costs			
(92 plus) A			91
(81-91) B			
(69-80) C		76	
(55-68) D			
(39-54) E			
(21-38) F			
(1-20) G			
Not energy efficient - higher running costs			
England & Wales		EU Directive 2002/91/EC	

Environmental Impact (CO ₂) Rating		Current	Potential
Very environmentally friendly - lower CO ₂ emissions			
(92 plus) A			
(81-91) B			
(69-80) C			
(55-68) D			
(39-54) E			
(21-38) F			
(1-20) G			
Not environmentally friendly - higher CO ₂ emissions			
England & Wales		EU Directive 2002/91/EC	

69 HIGH STREET, ASHFORD, KENT TN24 8SF

Tel: 01233 610444

www.martinsestates.co.uk

email: sales@martinsestates.co.uk